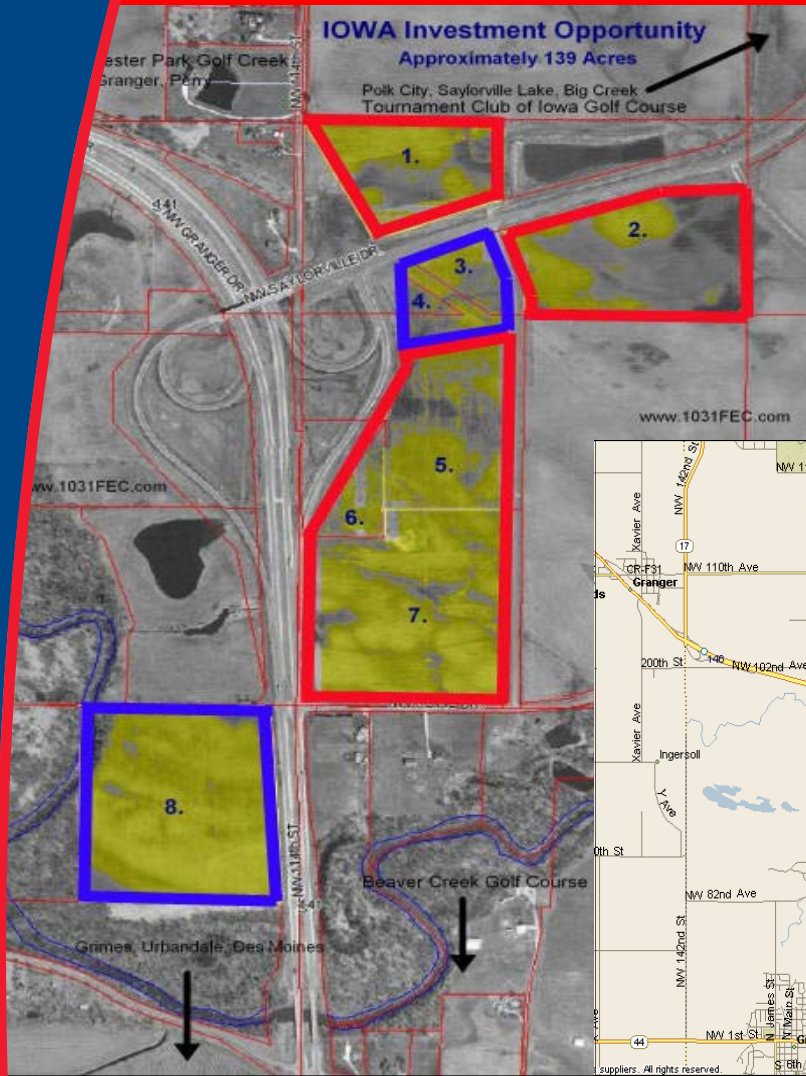


Hwy 141 & NE SAYLORVILLE DRIVE



Commercial Zoning

Residential Zoning



Steddom Farms—Prime Future Development Land

Sale Price: \$24,000/Acre

- 139+/- Acres Available
- Residential/Commercial Zoning
- Brand new Saylorville Drive interchange
- Close to Beaver Creek Golf Course, TCI Golf Course, Jester Park Golf Course, Jester County Park & Saylorville Lake
- Traffic Count on Hwy 141: 18,000 VPD, 2004 IDOT. Currently estimated at a higher count
- Land division possible

Jon Seibert
515-453-5480

3501 Westown Parkway
West Des Moines, Iowa 50266
Phone 515-222-0000
Fax 515-453-5430
JSeibert@iowarealtycommercial.com



The information contained herein is deemed reliable but not guaranteed by Iowa Realty Commercial.