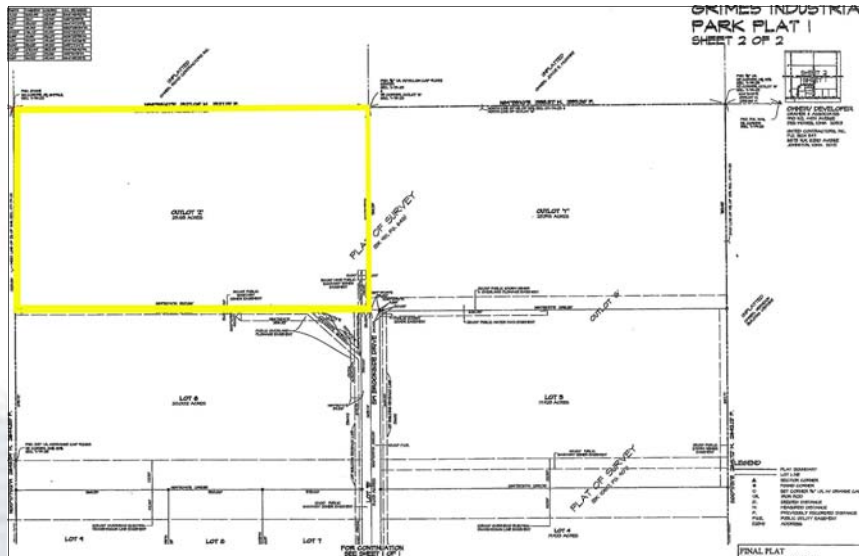


OUTLOT Z, GRIMES INDUSTRIAL PARK, PLAT 1, GRIMES, IA 50111



Industrial Land for Sale Grimes Industrial Park Outlot Z, Plat 1

Kevin Crowley, SIOR 515-453-5429
Jason Lozano 515-453-5471

3501 Westown Parkway
West Des Moines, Iowa 50266
Phone 515-222-0000 Fax 515-453-5430
KCrowley@IowaRealtyCommercial.com
JLozano@IowaRealtyCommercial.com

*Sale Price: \$575,000
Price Per Acre: \$24,822
Lot Size: 23.165 Acres
Taxes: \$398.00
Zoned: M-2*



The information contained herein is deemed reliable but not guaranteed by Iowa Realty Commercial.