



## Johnston Business Park Development Lots For Sale

- Sale Price: \$1.95 SF - \$3.00 SF
- Available SF: 12,328
- Lot Sizes: 1.51 - 10 Acres
- Traffic Count: 10,400
- Great location for contractors and other office users in Johnston
- Fully developed with all utilities to the site
- Outdoor storage is permitted
- Located east of Lower Beaver Dr. on the corner of NW 66th Dr and Toni Dr

Blake Brown 515-453-5565

Michael Billings 515-453-5566



**BROWN & BILLINGS**  
COMMERCIAL REAL ESTATE SERVICES

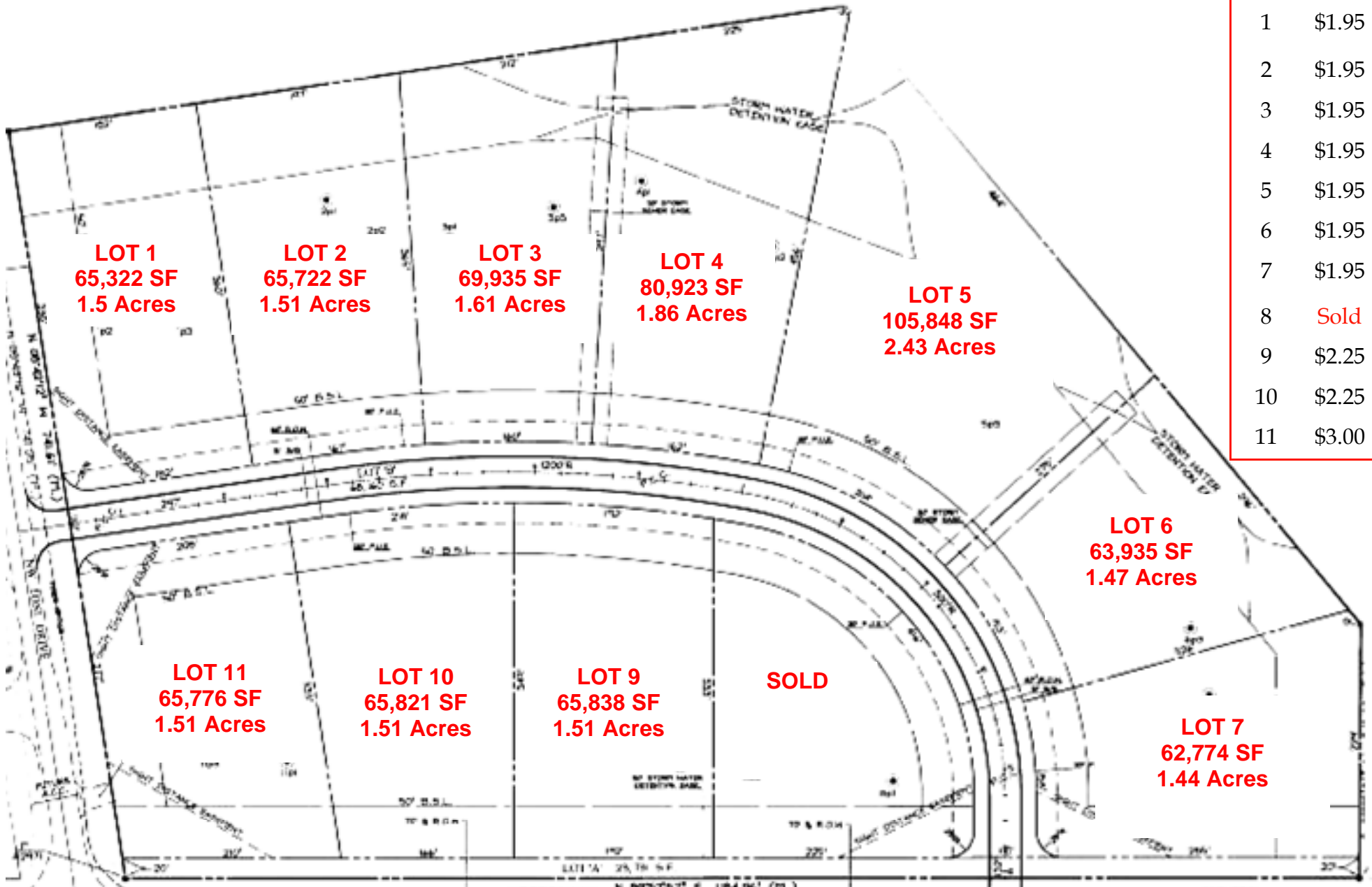
80 E. Laurel Street  
Waukee, IA 50263  
Fax 515-453-5576

BlakeBrown@IowaRealtyCommercial.com  
MichaelBillings@IowaRealtyCommercial.com

**IowaRealty**  
**COMMERCIAL**

[IowaRealtyCommercial.com](http://IowaRealtyCommercial.com)

# NW 66TH AND TONI DRIVE, JOHNSTON, IOWA



<u>Lot #</u>	<u>Price PSF</u>
1	\$1.95
2	\$1.95
3	\$1.95
4	\$1.95
5	\$1.95
6	\$1.95
7	\$1.95
8	Sold
9	\$2.25
10	\$2.25
11	\$3.00

NW 66TH AND TONI DRIVE, JOHNSTON, IOWA



*The information contained herein is deemed reliable but not guaranteed by Iowa Realty Commercial.*