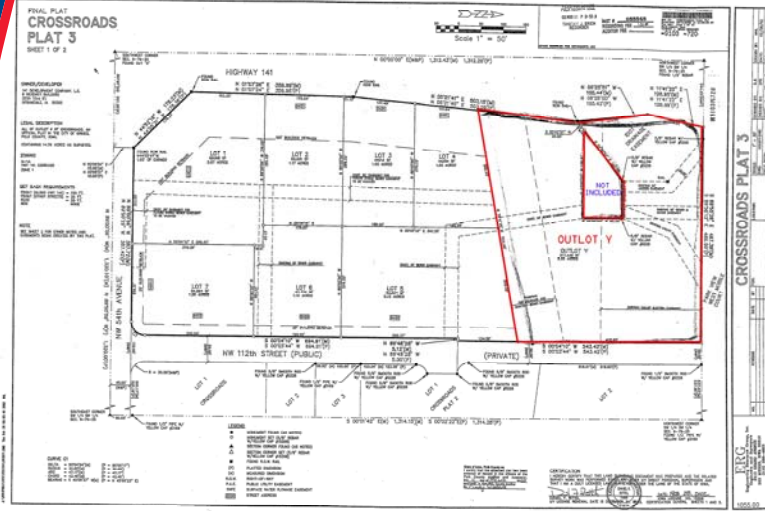


# CROSSROADS PLAT 3, OUTLOT Y, Hwy 141/NW 112TH STREET, GRIMES



Land For Sale

Sale Price: \$95,000

- Lot Size: 5 Acres
- Great Hwy 141 Frontage
- Perfect for Landscape/Nursery
- Signalized Intersection

- Huge Visibility
- **Big Traffic Counts**
- New Wal-Mart under construction

**Jon Seibert** 515-490-1140

3501 Westown Parkway  
West Des Moines, Iowa 50266  
Phone 515-222-0000  
Fax 515-453-5430

JSeibert@IowaRealtyCommercial.com

**IowaRealty**  
**COMMERCIAL**

[IowaRealtyCommercial.com](http://IowaRealtyCommercial.com)

*The information contained herein is deemed reliable but not guaranteed by Iowa Realty Commercial.*