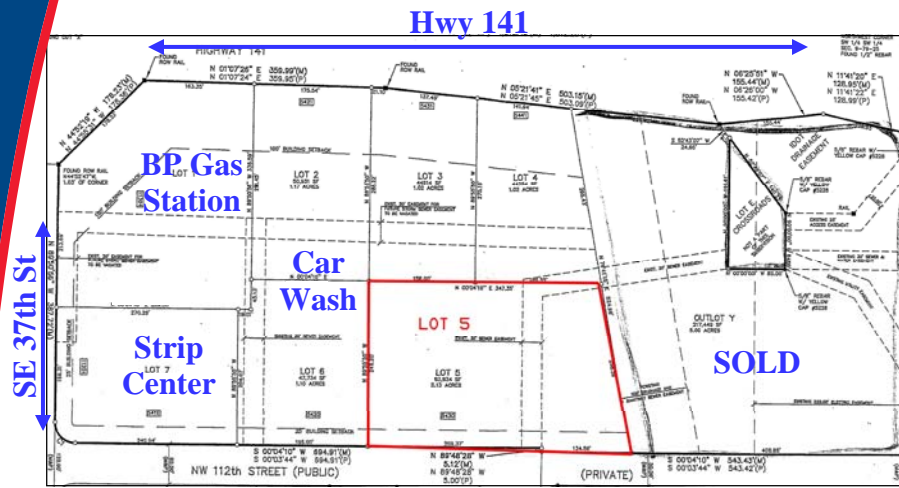


CROSSROADS PLAT 3, LOT 5, NW 112TH STREET, GRIMES



Land For Sale

- Sale Price: \$2.50/SF
- Lot Size: 2.13 Acres
- Signalized Intersection
- Great M-1A Zoning
- 2 Acres priced for a quick sale
- New Wal-Mart under construction
- Great location on busy corner at Hwy 141 and NW 54th Avenue

Jon Seibert 515-490-1140

3501 Westown Parkway
West Des Moines, Iowa 50266
Phone 515-222-0000
Fax 515-453-5430

JSeibert@IowaRealtyCommercial.com



The information contained herein is deemed reliable but not guaranteed by Iowa Realty Commercial.