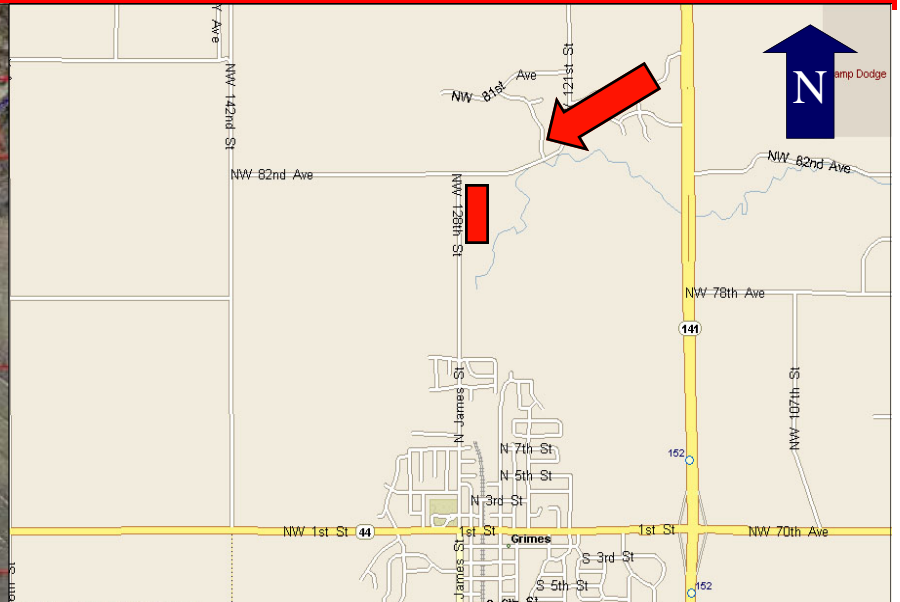


CHEVALIA VALLEY DEVELOPMENT, GRIMES, IA



Residential Land

- Zoning: R-3 (18 units per acre)
- 18.5 Acres
- Sale Price: \$59,900/Acre
- Apartments/Condos/Townhomes
- Perfect for Assisted Living complex

Jon Seibert 515-490-1140

3501 Westown Parkway
West Des Moines, Iowa 50266
Phone 515-222-0000
Fax 515-453-5430

JSeibert@IowaRealtyCommercial.com

Commercial Land

- Zoning: C-2/R-3
- 4.43 Acres
- Sale Price: \$3.25/SF
- Perfect for daycare, church or neighborhood convenience store

IowaRealty
COMMERCIAL
IowaRealtyCommercial.com

The information contained herein is deemed reliable but not guaranteed by Iowa Realty Commercial.