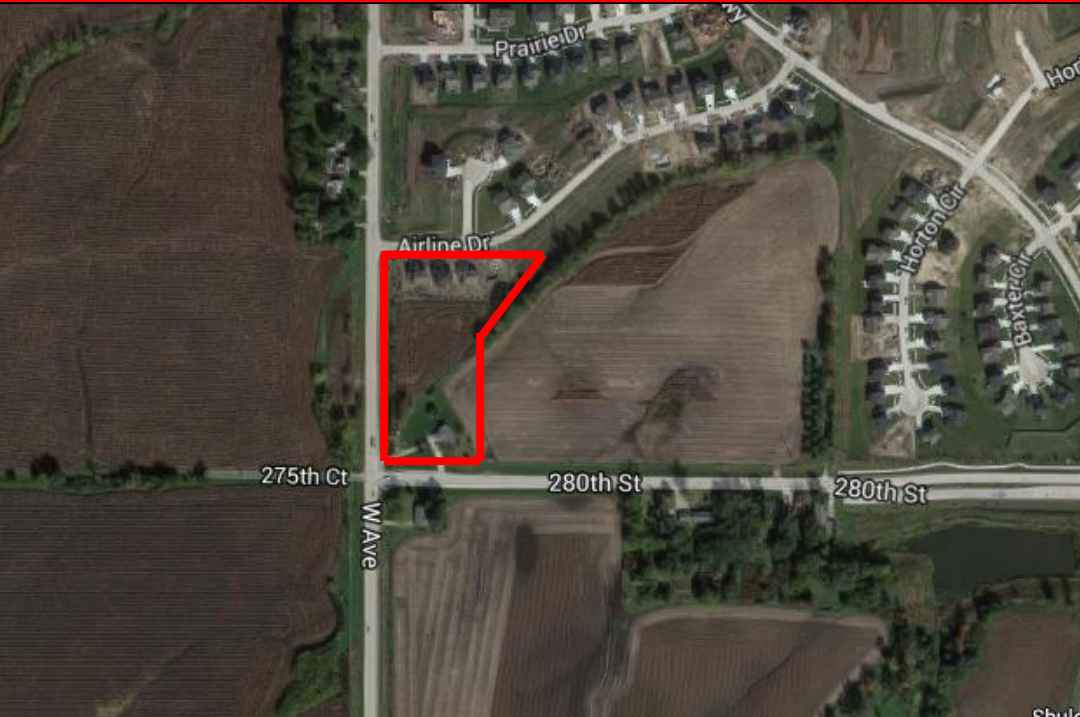


Alice's Rd. and Douglas Ave., Clive, Iowa 50263



- **Available Site:** 2.77 Acres
- **Zoning:** Neighborhood Commercial
- **Located on the corner of Alice's Rd. and Douglas Ave.**

Commercial Retail Land for Development
Sale Price: \$5.00/SF

Kevin Crowley 515-453-5429

Jason Lozano 515-453-5471

3501 Westown Parkway
West Des Moines, Iowa 50266
Phone 515-222-0000 Fax 515-453-5430

KCrowley@IowaRealtyCommercial.com
JLozano@IowaRealtyCommercial.com

