

MULTI-FAMILY INVESTMENT

802 & 808 LYON STREET, DES MOINES, IA 50309



SALE PRICE: \$ 120,000

PROPERTY SPECIFICS

802 - 4 Plex - 3,780 SF
Three 1 BR, 1 BA & One 2 BR, 1 BA
808 - Duplex - 2,016 SF
Two 1 BR, 1 BA

Tenants pay for their own electricity

Capitalization Rate: 13.7%

NET OPERATING INCOME

\$ 16,483.00

GENERAL INFORMATION

- Apartments have been remodeled within the last 2 years
- Lot Size: .136 Acre (5,928 SF)
- Zoning: R-4
- Excellent Investment opportunity
- Conveniently located off of I-235
- Great location, close to State Capitol and the Historic East Village

Jason Reels

515-453-5416

Stephanie Tigges

515-453-5466

3501 Westown Parkway

West Des Moines, Iowa 50266

Phone 515-222-0000 Fax 515-453-5430

JReels@IowaRealtyCommercial.com

STigges@IowaRealtyCommercial.com

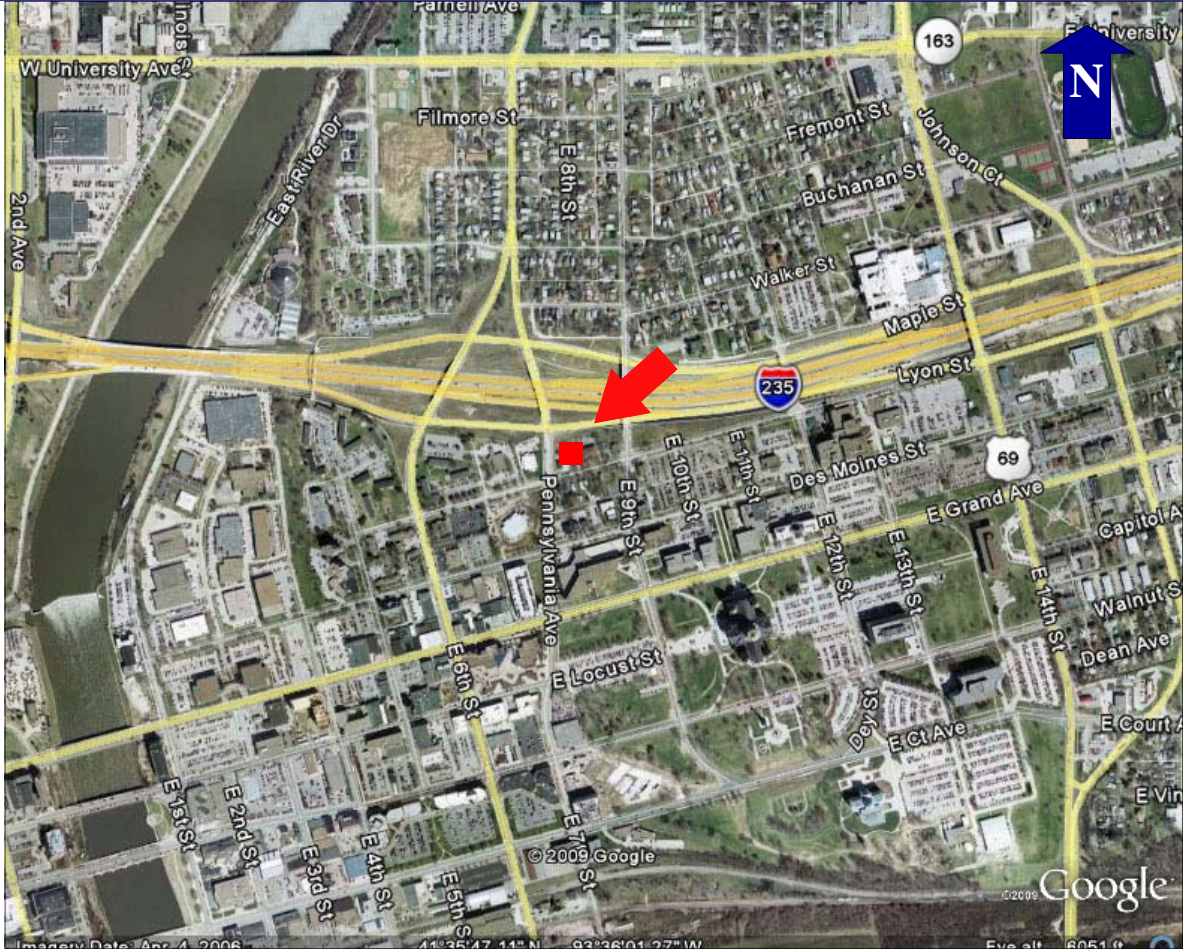
IOWARealty
COMMERCIAL

IowaRealtyCommercial.com

The information contained herein is deemed reliable but not guaranteed by Iowa Realty Commercial.

MULTI-FAMILY INVESTMENT

802 & 808 LYON STREET, DES MOINES, IA 50309



The information contained herein is deemed reliable but not guaranteed by Iowa Realty Commercial.