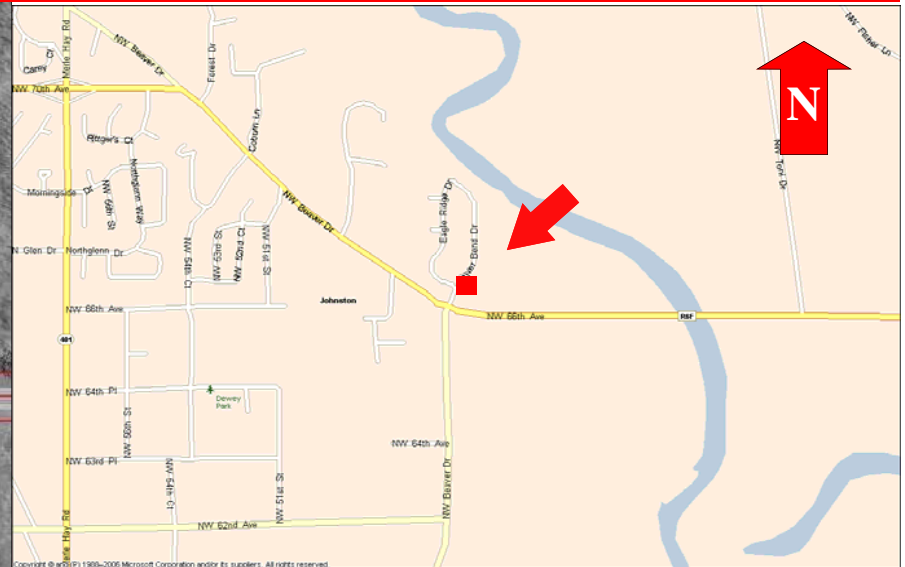


6645 RIVER BEND, JOHNSTON, IA 50131



Development Land For Sale

Sale Price: \$686,000

- Lot Size: 152,635 SF (3.5 Acres)
- Taxes: \$1,694
- Zoned: C-2
- Ready for development

- Great corner in Johnston's Eagle Ridge Estates
- Site would be ideal for Mixed Use and Retail
- Located NW Beaver Avenue & NW 66th Avenue
- Traffic Count: 8,100 VPD (IDOT 2004)

John R. Knapp 515-778-8870
B.J. Connolly, III 515-770-8431

3501 Westown Parkway
West Des Moines, Iowa 50266
Phone 515-222-0000 Fax 515-453-5430

JKnapp@IowaRealtyCommercial.com
BJConnolly@IowaRealtyCommercial.com

IowaRealty
COMMERCIAL

IowaRealtyCommercial.com

The information contained herein is deemed reliable but not guaranteed by Iowa Realty Commercial.

6645 RIVER BEND, JOHNSTON, IA 50131



The information contained herein is deemed reliable but not guaranteed by Iowa Realty Commercial.