

4150 WESTOWN PARKWAY WEST DES MOINES, IOWA 50266



Office/Retail For Lease

- Lease Rate: \$12/sf modified gross
- Terms: 3-5 yrs w/ TI allowance
- Suite 103 575 SF
- Suite 303 1,200 SF
- Suite 305 1,100 SF
- Suites 303 & 305 are contiguous 2,300 SF
- Parking: Ample
- Location: Intersection of 42nd St
& Westown Prkwy



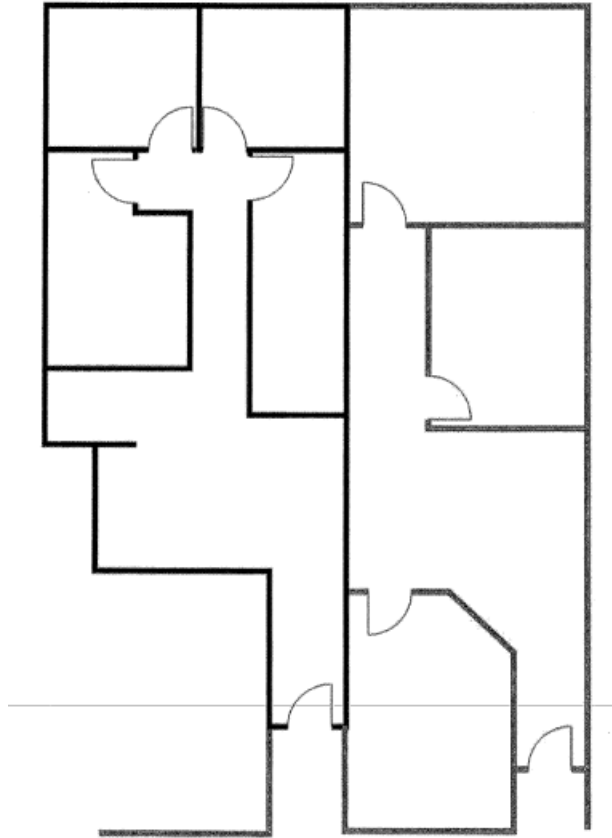
Mark Timmins 515-988-2765
markt@iowarealtycommercial.com

Russ Schoenauer Jr 515-491-3026
R.Schoenauer@IowaRealtyCommercial.com

Judy Patterson 515-453-5459
JPatterson@IowaRealtyCommercial.com

IOWARealty
COMMERCIAL
IowaRealtyCommercial.com
3501 Westown Parkway, West Des Moines, IA 50266

4150 WESTOWN PARKWAY



Suite 303

Suite 305