

3205-07 DOUGLAS AVE, DES MOINES, IOWA, 50310



Excellent Office/Retail Location For Sale or Lease

- Lease Rate: \$7.00 NNN
- Lot Size: .419 acre
- Available Space: 4,200 SF - Can be subdivided
 - 1,400 SF with 1 bathroom
 - 2,800 SF with 2 bathrooms
- Parking Spaces: 25
- Zoning: C-1
- Traffic Count: 21,000
- On Dart bus line
- Across the street from V A Hospital
- Located on the busy corner of Douglas Ave and lower Beaver

Mick Grossman 515-453-5432

Stephanie Tigges 515-453-5466

3501 Westown Parkway

West Des Moines, Iowa 50266

Phone 515-222-0000 Fax 515-453-5430

MickG@IowaRealtyCommercial.com

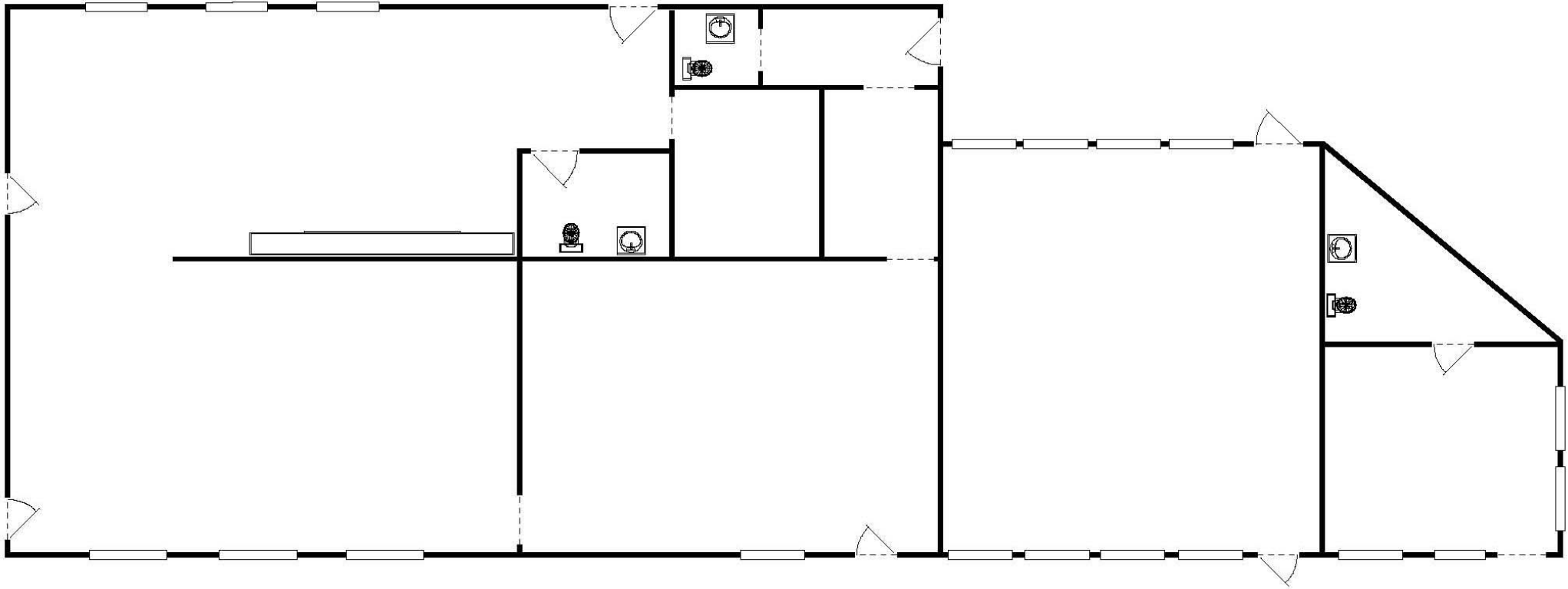
STigges@IowaRealtyCommercial.com

IOWARealty
COMMERCIAL

IowaRealtyCommercial.com

The information contained herein is deemed reliable but not guaranteed by Iowa Realty Commercial.

3205-07 DOUGLAS AVE, DES MOINES, IOWA, 50310



The information contained herein is deemed reliable but not guaranteed by Iowa Realty Commercial.