

Historic Office/Retail For Sale

- Sale Price: \$395,000
- Taxes: \$6,738
- Available SF: 5,254
- Lot Size: 7,250 SF
- Frontage: 50'
- Zoning: VJHB
(Valley Junction Historic Business District)

- Wonderful historic home converted for commercial retail/office use
- Larger front building sits right along 5th St with great visibility and store-front street parking
- Smaller building located behind the front building may be a residence or a retail/office space
- Located in the Valley Junction Historic Business District

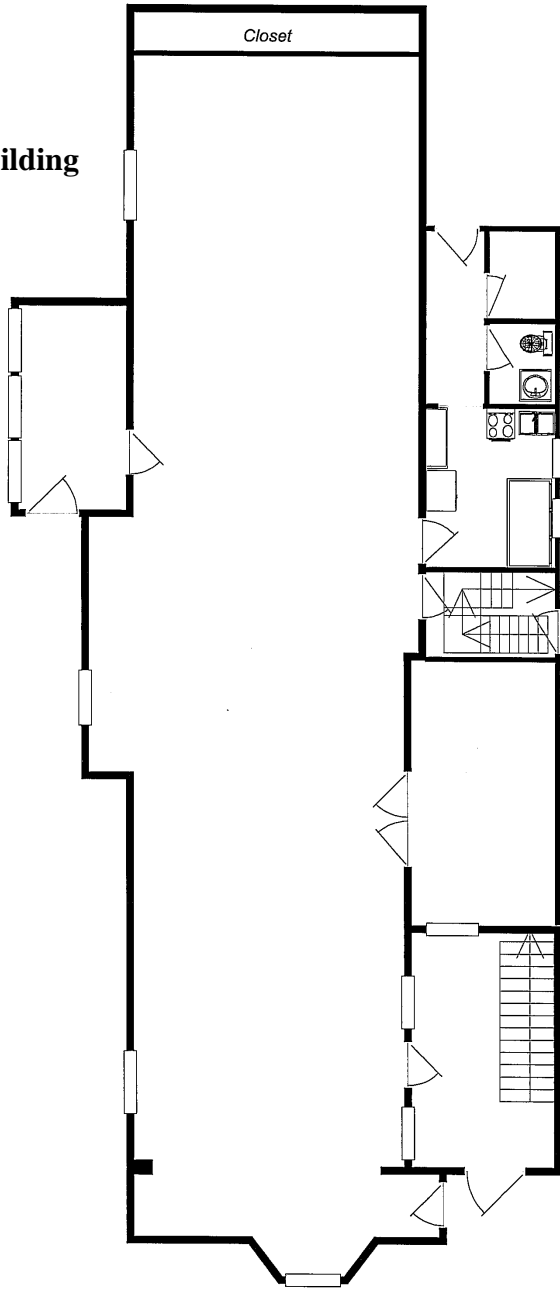
Judy Patterson 515-453-5459
Ed Urbanek 515-453-5423

3501 Westown Parkway
West Des Moines, Iowa 50266
Phone 515-222-0000
Fax 515-453-5430

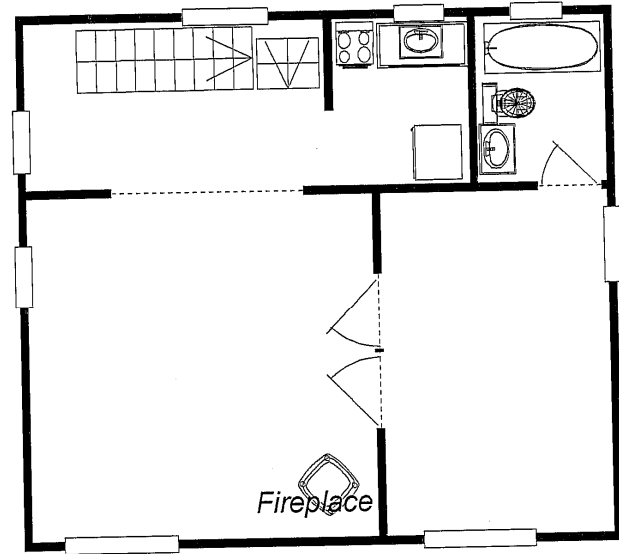
JPatterson@IowaRealtyCommercial.com
EUrbanek@IowaRealtyCommercial.com



Main Building



**Second Building
Upper Level**



**Second Building
Lower Level**

