

3-11 COLLEGE AVENUE, DES MOINES, IA 50314



OFFICE/FLEX BUILDING IN CENTRAL PLACE INDUSTRIAL PARK LEASE RATE: \$5.25/SF NNN

- Available Space: Suite 1A - 3,000 SF (Office)
Suite 1B - 5,210 SF (Warehouse)
Suite 2 - 2,940 SF (Flex)
- Lease Term: 3-5 years
- Ceiling Height: 12'-14'
- Dock Doors: 2
- Drive-In Door: 1
- Very nice office space with convenient access to I-235 and Downtown
- Plenty of off-street parking
- Furniture and movable partitions can remain
- Located on College Avenue, Central Place Industrial Park

Kevin Crowley, SIOR 515-453-5429

Jason Lozano 515-453-5471

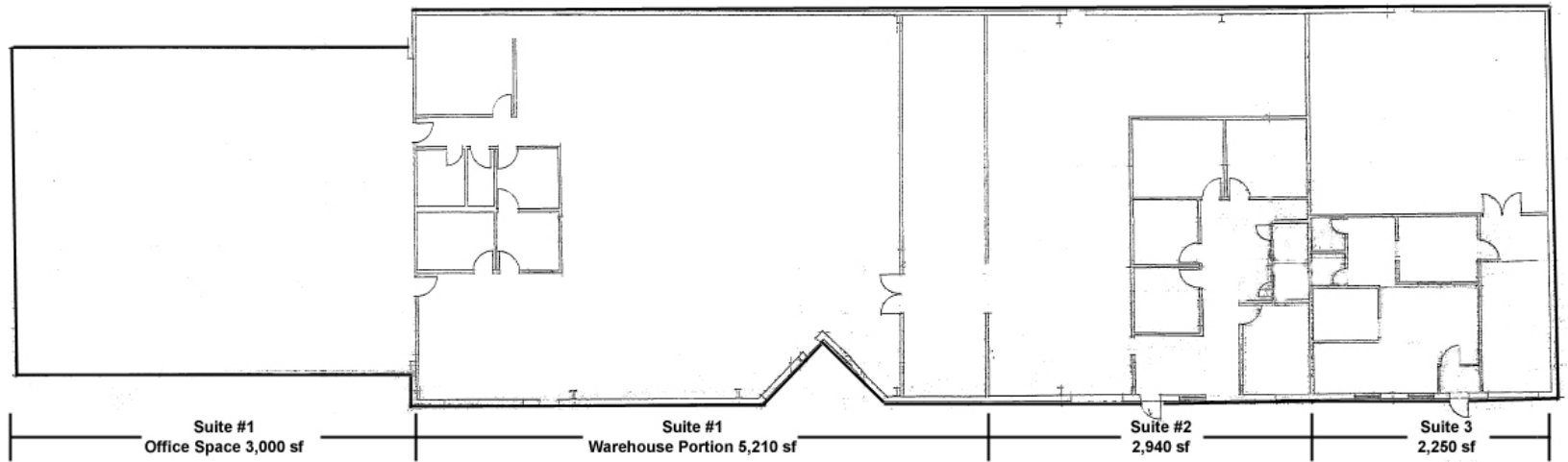
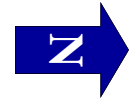
3501 Westown Parkway
West Des Moines, Iowa 50266
Phone 515-222-0000 Fax 515-453-5430

KCrowley@IowaRealtyCommercial.com
JLozano@IowaRealtyCommercial.com

IowaRealty
COMMERCIAL

IowaRealtyCommercial.com

3-11 COLLEGE AVENUE, DES MOINES, IA 50314



CENTRAL PLACE DEVELOPMENT

1/8" = 1'-0" NORTH