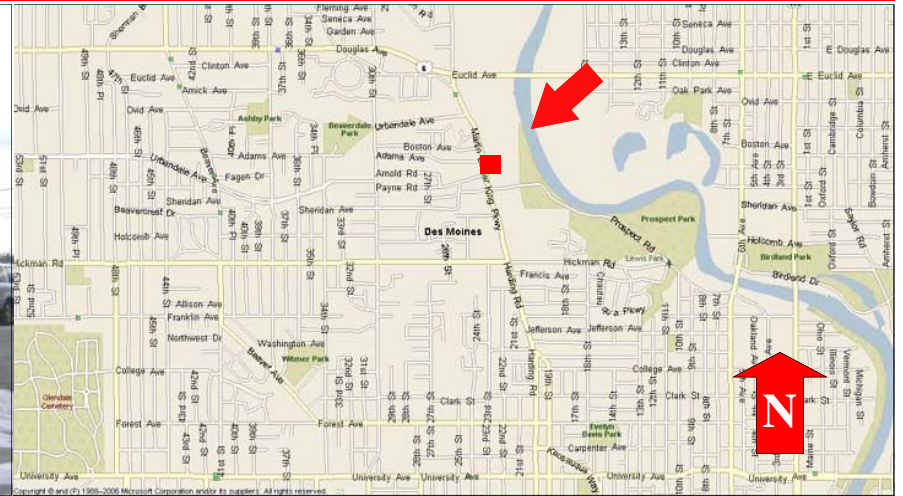


# 2917 MARTIN LUTHER KING JR PKWY, DES MOINES, IA 50310



## *Office Building For Sale*

*Sale Price: \$280,000*

- Building Size: 1,880 SF + 1,880 sf basement
- Lot Size: 41,755 SF (.959 Acre)
- Taxes: \$7,762
- Zoning: C-2
- Drive-In-Doors: 2
- Nice office building with beautiful finishes. Drive-in in rear of building. Perfect for shop area. The drive can fit 3 trucks.
- Located on MLK Jr Pkwy, south of Euclid.

**B.J. Connolly III** 515-453-5498  
**John R. Knapp** 515-778-8870

3501 Westown Parkway  
West Des Moines, Iowa 50266  
Phone 515-222-0000 Fax 515-453-5430

BJConnolly@IowaRealtyCommercial.com  
JKnapp@IowaRealtyCommercial.com

**IOWA**Realty  
**COMMERCIAL**  
[IowaRealtyCommercial.com](http://IowaRealtyCommercial.com)

2917 MARTIN LUTHER KING JR PKWY, DES MOINES, IA 50310

