



**2102 SOUTH 5TH AVE, MARSHALLTOWN  
CARE FACILITY FOR SALE**



- Available 6,144 SF
- List Price: \$415,000
- Zoning: Commercial

**MARK E. TIMMINS, J.D.**  
**(515) 988-2765**

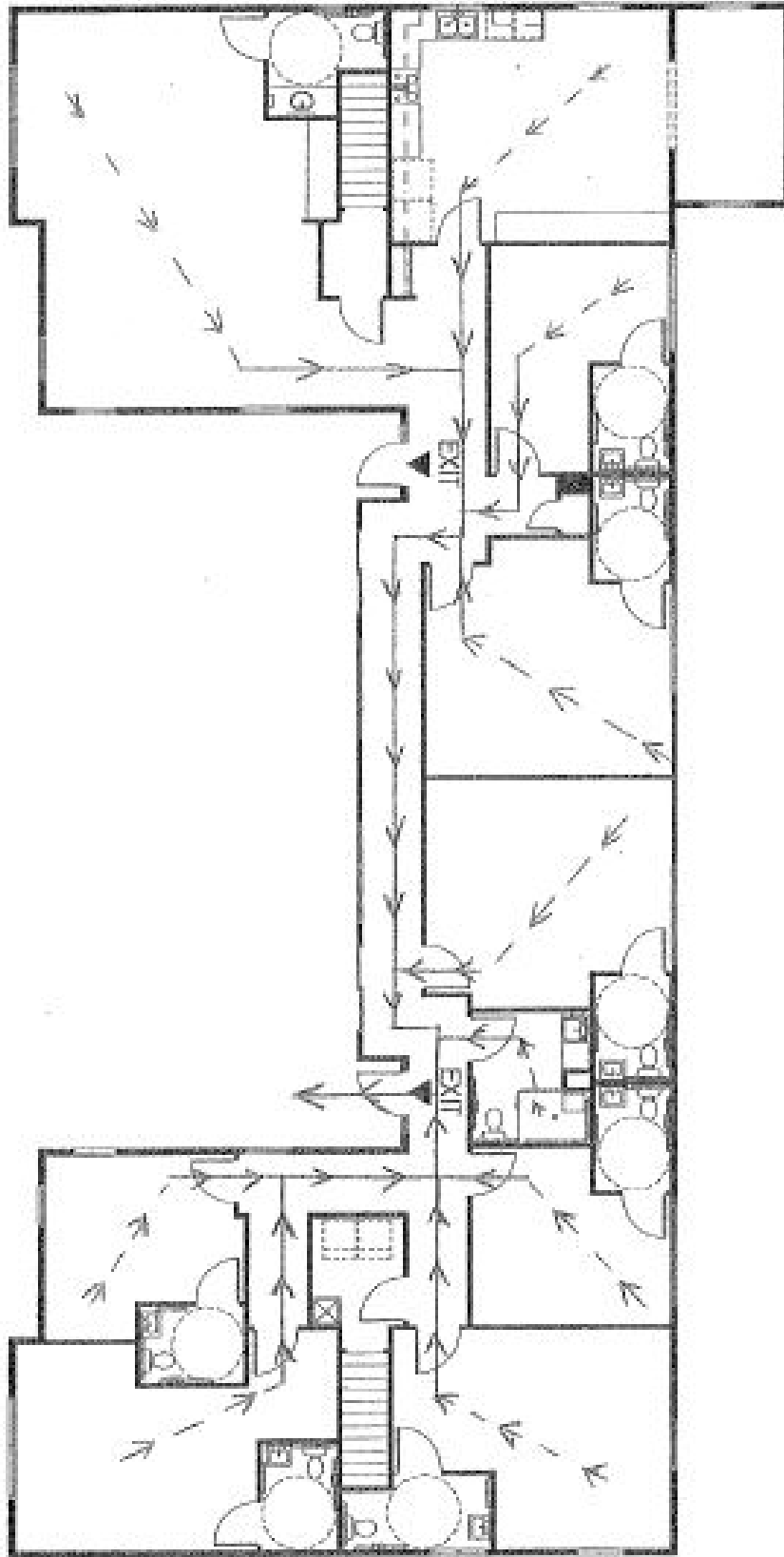
**MarkT@IowaRealtyCommercial.com**



- 7 Care rooms, 11 Bed capacity  
Living room, kitchen, laundry room,  
office & onsite apartment in  
walk-out lower level

**JORDAN BOUSLOG**  
**(515) 402-9131**

**JordanB@IowaRealtyCommercial.com**



**MARK E. TIMMINS, J.D.**  
**(515) 988-2765**

**MarkT@IowaRealtyCommercial.com**

**JORDAN BOUSLOG**  
**(515) 402-9131**

**JordanB@IowaRealtyCommercial.com**