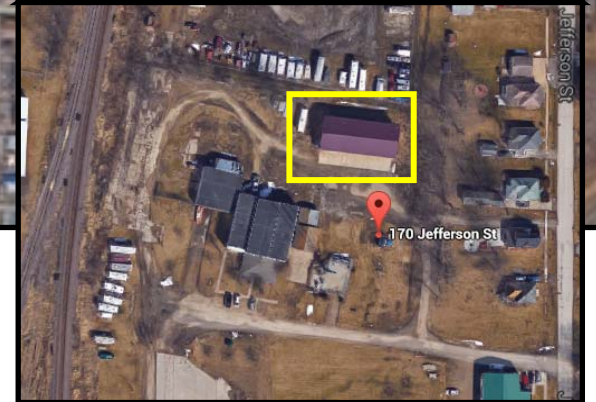
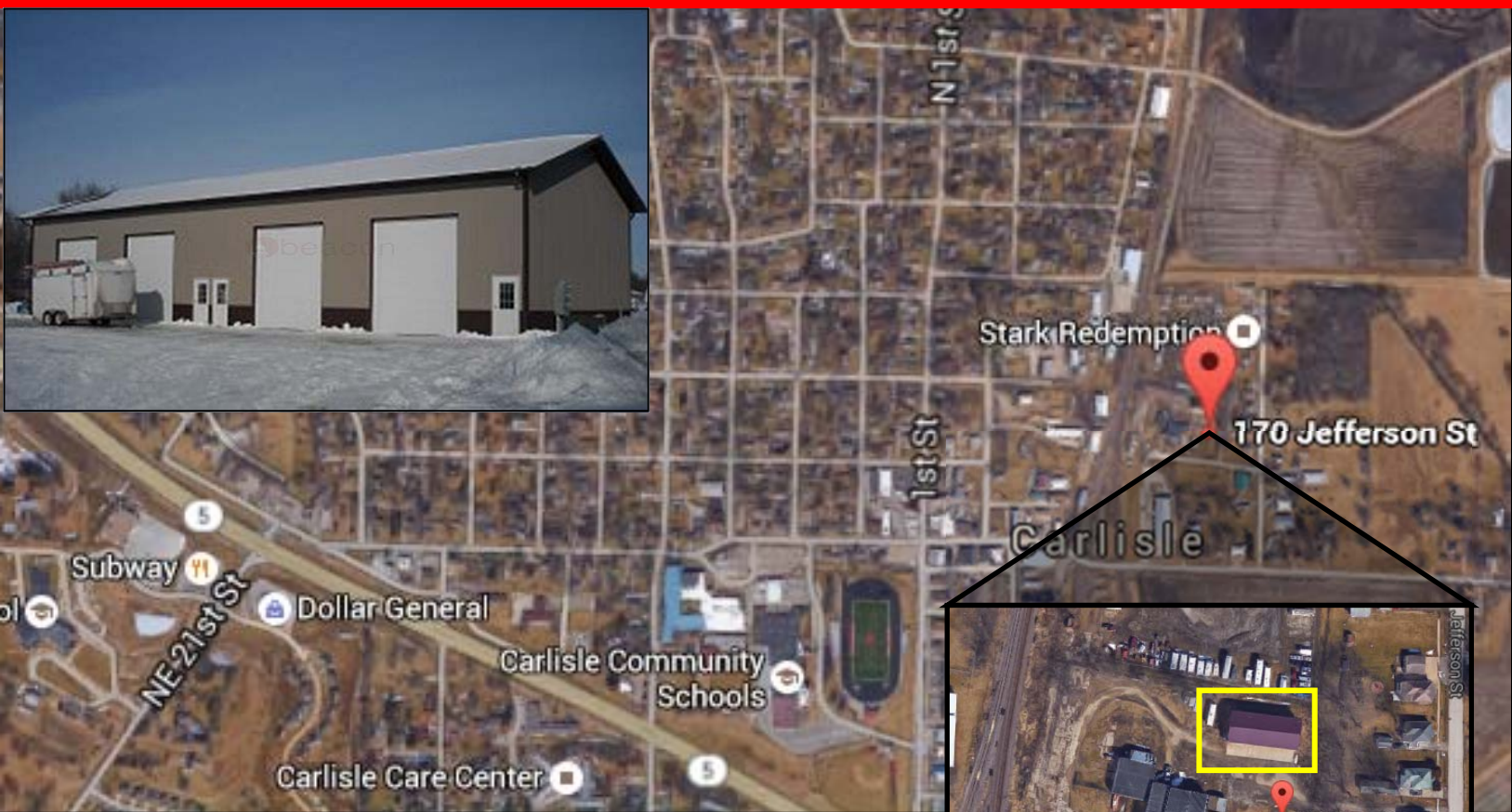


FOR LEASE



170 Jefferson Street, Carlisle

Property Features:

- Lease Rate: \$700 Gross
- Total Building Size: 4,000 SF
- Available Space: 1,000 SF
- Industrial Bay
 - Heated & A/C Forced Air
 - 1/2 Restroom
 - One 12 x 14' Overhead Door
- Office Space Available In Neighboring Suite Upon Request

Jordan Bouslog

515-402-9131

jordanb@IowaRealtyCommercial.com

IowaRealty
COMMERCIAL